



The preferred high-quality supplier for large global enterprises

# — JKIDC60/80 Series —

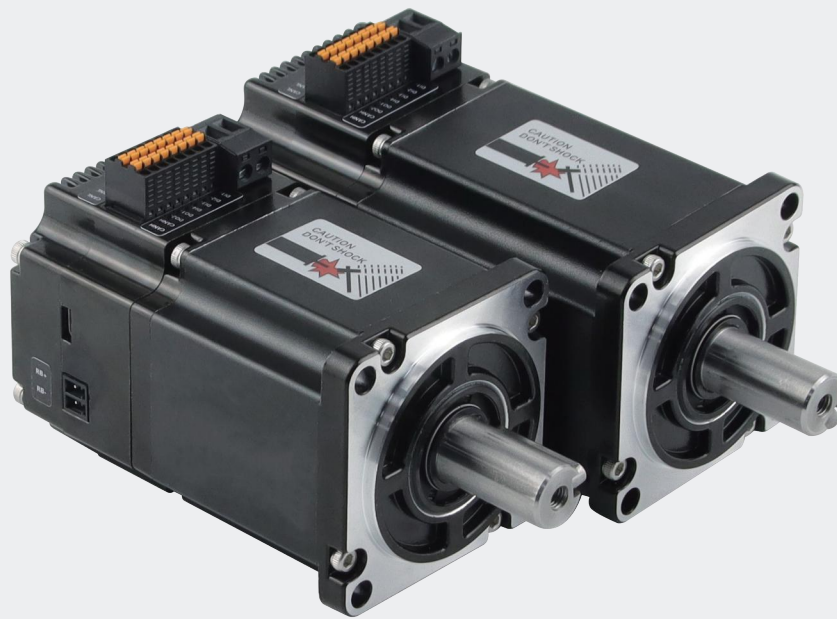
## Intelligent Integrated DC Servo Motor

Pulse

RS485

CANopen

EtherCAT<sup>®</sup>



Rated voltage: 24V 、 48V

Rated power: 200W 、 400W、 750W

Compact structure

Simple wiring

Safe and reliable

[www.jkongmotor.com](http://www.jkongmotor.com)

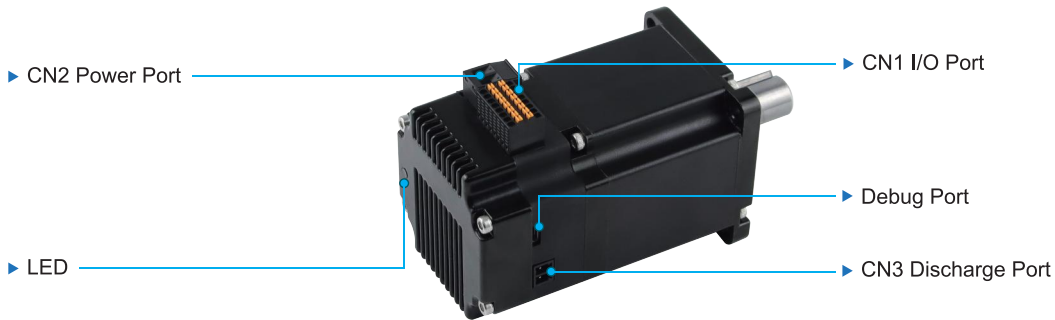
## Product Features

- **More economical:** The driver and motor are perfectly combined, reducing wiring and saving space
- **More stable:** It features multiple levels of protection such as overcurrent, over-temperature and overvoltage
- **More reliable:** An external braking resistor can be connected to enhance reliability during high-dynamic movements
- **More user-friendly:** Supports CANopen bus, RS485 and pulse, facilitating network control
- **More convenient:** Debug or update the firmware using a standard MicroUSB cable and support it Update the firmware via RS485 or Canopen bus
- **More precise:** It adopts a 17-bit high-precision single-turn absolute value encoder

## Input/Output

- The pulse command supports 5V differential signals
- 4 channels of customizable digital input signals, supporting PNP/NPN connection methods
- Two customizable digital output signals, supporting PNP/NPN connection methods
- The motor is powered by a 24-50VDC power supply and is equipped with an adaptive brake for power supply. No additional brake power supply is required; (For vertical applications)

## Interface layout

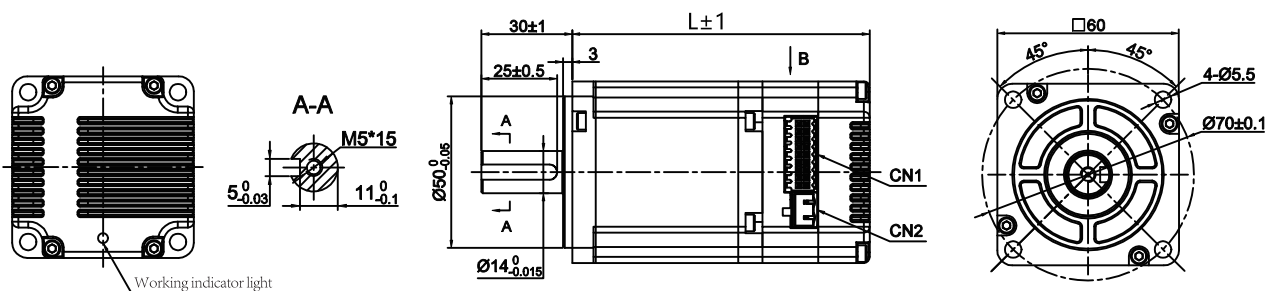


## IDC60 Specification parameters

Model	Rated voltage (V)	Rated current (A)	Rated torque (N.m)	Rated speed (RPM)	Rated power (W)	Encoder/Control mode	Moment of inertia (Kg.cm <sup>2</sup> )	Weight (Kg)	Length (mm)
JKIDC60-P124A1	24	11.5	0.63	3000	200	17bit single turn absolute encoder	0.3	0.98	standard 98.3 with brake 121
JKIDC60-R124A1									
JKIDC60-C124A1									
JKIDC60-P148A1	48	6.5	1.27	3000	400	Pulse type RS485 CANopen	0.55	1.325	standard 116.3 with brake 139
JKIDC60-R148A1									
JKIDC60-C148A1		11.5	1.27	3000	400	Pulse type RS485 CANopen	0.55	1.325	standard 116.3 with brake 139
JKIDC60-P248A1									
JKIDC60-R248A1	11.5	1.27	1.27	3000	400	Pulse type RS485 CANopen	0.55	1.325	standard 116.3 with brake 139
JKIDC60-C248A1									

※ The above are only representative products. Special requirement products can be customized according to customer requirements

## Dimensions unit:mm

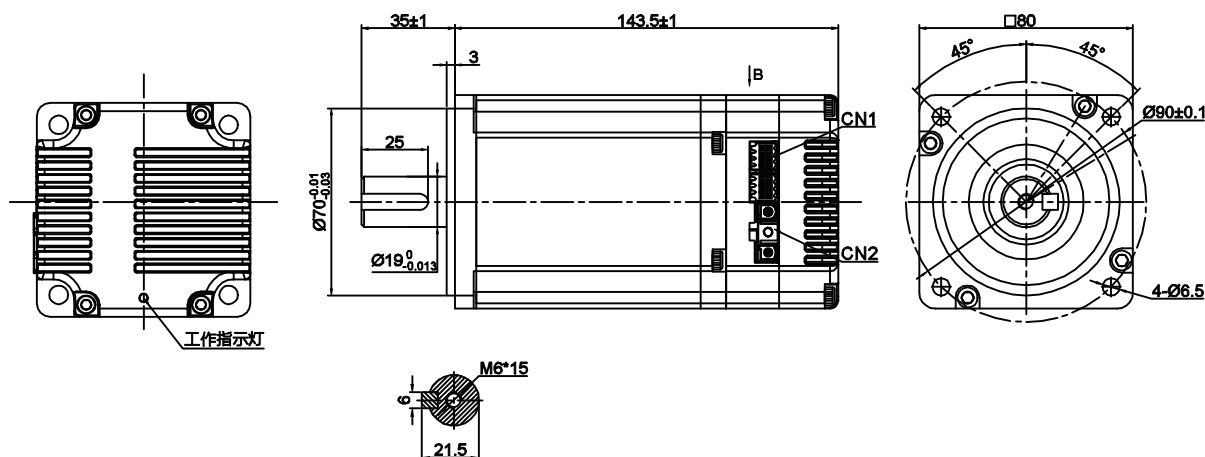


## IDC80 Specification parameters ▾

Model	Rated voltage (V)	Rated current (A)	Rated torque (N.m)	Rated speed (RPM)	Rated power (W)	Encoder/Control mode	Moment of inertia (Kg.cm <sup>2</sup> )	Weight (Kg)	Length (mm)
JKIDC80-P148A1	48	20	2.4	3000	750	17bit single turn absolute encoder Pulse type RS485 CANopen	2.42	2.15	standard
JKIDC80-R148A1									143.5
JKIDC80-C148A1									180

※ The above are only representative products. Special requirement products can be customized according to customer requirements

## Dimensions unit:mm ▾



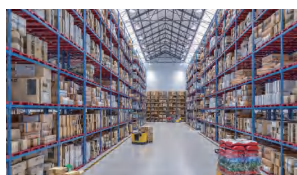
## Application industry ▾



AGV



Robot



Logistics



Printing



New energy



JKIDC Servo products



Agriculture



Medical care

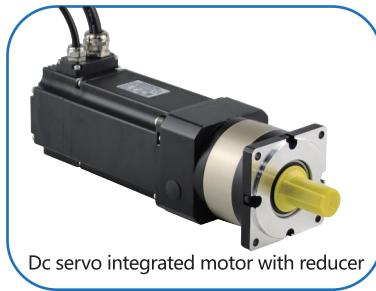


Textile

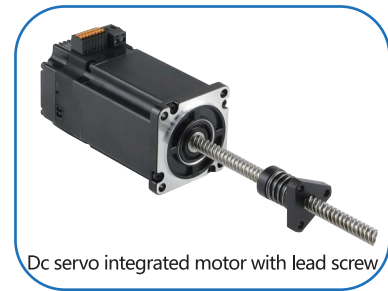
## Customized products ▾



Dc servo integrated motor waterproof



Dc servo integrated motor with reducer



Dc servo integrated motor with lead screw

## Ordering information ▾

### JKIDC60/80 Series of intelligent integrated servo motors

**JK-IDP-60-C-1-24-A1-B1-X01-H-3-G-03**

① ② ③ ④ ⑤ ⑥ ⑦ ⑧ ⑨ ⑩ ⑪ ⑫ ⑬

① **Name**

JK: Changzhou Jkongmotor

② **Integrated DC Motor Series**

IDP: Integrated DC Servo waterproof type

IDC: Integrated DC Servo plug type

IBP: Integrated BLDC waterproof type

IBC: Integrated BLDC plug type

③ **Motor frame**

42=42mm; 57=57mm

60=60mm; 80=80mm

86=86mm

④ **Control type**

P: Pulse R: RS485 C: CANopen

⑤ **Output power options**

42: 1=26W; 2=53W; 3=78W

57: 1=91W; 2=140W; 3=200W

60: 1=200W; 2=400W

80: 1=750W; 2=1000W

86: 1=220W; 2=315W; 3=440W

4=565W; 5=660W; 6=785W

⑥ **Voltage**

24=24V; 36=36V

48=48V; 72=72V

⑦ **Encoder type**

A1: 17bit single turn absolute encoder A2: 17bit multi turn absolute encoder

A3: 15bit single turn absolute encoder A4: 15bit multi turn absolute encoder

⑧ **Brake(Optional)**

B1: 24V brake;

B2: 48V brake

⑨ **Shaft type**

None: Standard output shaft;

01: Special output shaft

⑩ **Leading wire type**

Y: Crimping shell ; H: Aviation plug; M: PG Gland

⑪ **Number of leading wires**

Crimping shell: 3=Power supply+communication+I/O;

4=Power supply+2×communication+I/O

Aviation plug: 2=Power supply+communication;

4=Power supply+2×communication+I/O

PG Gland: 2=Power supply+communication;

4=Power supply+2×communication+I/O

⑫ **Gearbox (optional)**

G: Planetary gearbox;

RG: Right-angle planetary gearbox;

WG: Worm gearbox

⑬ **Gear ratio of the gearbox**

03: 1:3; 05: 1:5; 10: 1:10; 20: 1:20

## CHANGZHOU JK MOTOR CO.,LTD

Add: Building A2, Hutang Industrial Zone, Wujin District, Changzhou China

Zip: 213162

Tel: +86 519 88372558 Fax: +86 519 88713769

Email: sales@jkongmotor.com; Website: www.jkongmotor.com



For more up-to-date information, please scan the code to follow!

※ The product performance and specifications published in this promotional brochure are subject to change due to product improvements or other reasons without further notice. We apologize for any inconvenience this may cause. For more details about our products, please contact our sales department.

All rights reserved. Reproduction in any form is prohibited